



TOWN OF WYOMING NEWS

Volume XIX, No. 1

December, 2012

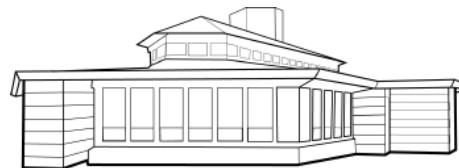
TAXES INCREASE 3.9%

After dropping a bit last year, taxes levied against property in the Town of Wyoming increased \$70,204, an increase of 3.9% over last year, and in line with the 3 to 4 % increases the previous few years.

<u>Levies</u>	<u>2012</u>	<u>2011</u>
Town	\$ 90,000	\$106,000
Fire – Spring Green	69,401	66,974
Fire – Dodgeville	11,143	9,854
Ambulance – Dodgeville	<u>2,568</u>	<u>2,549</u>
Total Town	173,112	185,377
State	16,788	16,461
County	582,462	567,644
School – River Valley	726,061	678,503
School – Dodgeville	362,459	349,977
Voc. – MATC	123,313	113,337
Voc. – SWTC	<u>66,197</u>	<u>65,312</u>
TOTAL LEVIES	2,050,392	1,976,611
State School Cr – RV	(115,315)	(112,423)
State School Cr – DV	(52,645)	(52,050)
PROPERTY TAXES	1,882,432	1,812,138
Lottery Credit	(9,715)	(9,318)
First Dollar Credit	(19,114)	(18,942)
TO BE COLLECTED	1,853,603	1,793,878
State Aids	1,010,027	1,054,801
Lottery Credit – RV	90.33	92.10
Lottery Credit – DV	100.17	102.61
First Dollar Credit RV	71.64	69.59
First Dollar Credit – DV	79.44	77.53
ASSESSED VALUE	95,696,300	96,165,800
EQUALIZED VALUE	98,924,100	96,997,400
AVE ASSESS. RATIO	96.74	99.14

Property values have been steady or have not declined in value in the Town of Wyoming to the degree they have in other municipalities, resulting in a larger portion of taxing district levies being absorbed by the Town. For example, the River Valley School District, because of declining enrollment, received \$312,266 less in State Aids. It increased its levy this year to \$9,058,377, an increase of \$308,463 or 3.5%. The levy against the Town, as shown in the table above, increased 7.0%

Wyoming Valley School



Cultural Arts Center

The former Wyoming Valley School is now a Cultural Arts Center, thanks to the dedication and vision of Robert and Derry Graves and Bill Wilkie. Many other Wyoming and area residents contributed their time and resources to their vision. Two years ago, Jeff Jacobsen, the owner of the building, gave it to Wyoming Valley School, Inc, a non-profit corporation with IRS 501 (c) (3) status.

Now in its second year of operation, Pam Stefansson was recently appointed Director of the School. She also serves on the Board of Directors as Secretary/Treasurer. Other residents of Wyoming on the Board are Gerald Opgenorth, President; Victor Sidy, Vice-President; and Cindy Mack, Director. The other board members are Katie Green, Inez Learn, John McKenna and Peter Rott, all Spring Green area residents.

Their mission is to restore and preserve the Frank Lloyd Wright- designed school for use as an educational center offering arts and cultural workshops, performances and lectures.

because its portion of the Equalized Value of the entire school district increased from 7.75% to 8.0%. Same for Iowa Co., as Wyoming this year is 5.31% of the Equalized Value of the County compared to 5.18% last year. And the same for the Spring Green Area Fire Protection District. It levied the same amount as last year, but the Town portion of the levy increased 3.6% because the Town's portion of the total Equalized Value of the Fire District increased from 18.6% to 19.3%.

The total town levy decreased due to the application of the municipal levy limit formula. Levy limits are stepped up to accommodate general obligation debt service, of which Wyoming was paying \$17,058 per year since 2009 on a loan for the plow truck. In 2013 payments of \$4,448 will pay off the loan which lowers levy limits.

WYOMING ELECTIONS

This was a record year for the number of elections in Wisconsin. Besides the four regularly scheduled ones, there was a recall primary and a recall election, for a total of six. Wyoming did get relief by one election, as the only ballot item for the Spring Primary was a Dodgeville School District referendum. Since it applied only to the southern one-third of the Town, the voting for Wyoming residents was moved to City Hall in Dodgeville at the request of the School District in order to reduce election expenses. The turnout from here was three.

Despite the seemingly endless and contentious 2012 election season, Wyoming voters did not tune out and loose interest in the Presidential election on November 6, as 83% of registered voters cast a ballot – 168 voted on election day and 38 voted early or in absentee, for a total vote of 206. State wide the turnout was nearly 70%.

Each year the Wisconsin Dept. of Administration provides an estimate of the total population and the voting age population based on projections from the last U. S. Census. For 2012, the estimated population is 302 and the estimated voting age population is 245 but Wyoming had 249 registered voters, four more than the estimate. Five voters registered on election day, as Wisconsin is one of only a few states that allow same day registration.

One reason for the registered voter count exceeding the estimate, is that some voters with second homes here, opted to vote here rather than in the community where they are counted in the U. S. Census.

The results in Wyoming for the November 6th election, as shown below, usually differ significantly from national, state, district and county results. The lopsided margins in Wyoming for Obama and Baldwin are similar to Madison and Dane County, and opposite of the lopsided margins for Romney and Thompson in WOW country - that is Washington, Ozaukee and Waukesha counties in eastern Wisconsin.

PRESIDENT	TOWN	CO	WI	US
Obama (D)	(144) 70%	65%	53%	50%
Romney (R)	(61) 30%	34%	46%	48%
Others	(1)	1%	1%	2%

US SENATE	TOWN	CO	WI
Baldwin (D)	(140) 68%	60%	51%
Thompson (R)	(62) 30%	38%	46%
Others	(4) 2%	2%	3%

HOUSE – 2 ND DIST	TOWN	CO	DIST
Pocan (D)	(137) 71%	62%	68%
Lee (R)	(57) 29%	38%	32%

ASSEMBLY – 51 ST	TOWN	CO	DIST
Marklein (R)	(70) 34%	46%	52%
May-Grimm (D)	(133) 66%	54%	48%

Following are the results of the recall election held earlier in the year. The turnout for this election was 194, 79% of the estimated voting age population.

GOVERNOR	TOWN	CO	STATE
Walker (R)	(76) 39%	46%	53%
Barrett (D)	(118) 61%	53%	46%
Other	(0)	1%	1%

For the recall election, the voting margin narrowed and voter turnout increased compared to the 2010 Governor Election, in which 165 Wyoming voters cast ballots - 29% for Walker, 69% for Barrett and 2% for others.

With five elections, Clerk Mary Lloyd-Jones had a busy year which she handled in fine fashion, with Chief Election Inspector Wendy Dunagan her invaluable partner. Poll workers Erin Crooks, Laurie Derse, Cindy Mack, Herb Paaren, Londa Pronold and Mary Schultz were gracious and efficient, and all are recognized and thanked for their civic contribution.

Bringing back a former tradition in Wyoming in which the members of the Wyoming Valley United Methodist Church served a mid-day meal in the “Ladies Hall” on election day, Pam Stefansson, Director of the Wyoming Valley School, served coffee and sweet rolls at the school throughout the day on November 5.

The year 2013 should be a breather with only the Spring Election on April 2 and possibly a Primary on February 19.

Town of Wyoming website:
<http://www.townofwyoming.org>
For current information on all town activities including the Annual Pig Roast and planned Antique Tool Show for the spring.

TWO NEW BRIDGES

For a number of years, travelers have been passing over (1) the narrow bridge with deficient guardrails on Weaver Road that was posted with weight limits, and (2) the single-lane bridge on Sneed Creek Road that also was posted with weight limits. Since early fall, travelers have been passing over the replacements of these two bridges.

Near the end of 2011 there was an opportunity to obtain partial state funding for major road and bridge construction through the Town Road Improvement Program, i.e. TRIP, a bi-annual program through the Wis. Dept. of Transportation. \$94,740 was allocated to Iowa County, and the Iowa County TRIP Committee awarded funding to the Town of Clyde for three bridge replacements and the Town of Wyoming for two bridge replacements, in the amount of \$18,948 for each of the five bridges.

Engineering proposals were solicited to design and administrate the construction of the two bridges, both of which spanned cold water fisheries – Rush Creek under the Weaver Road bridge, and Sneed Creek under the Sneed Creek Road bridge. The contract was awarded to Jewell Associated Engineers of Spring Green, with Fred Gruber handling the project. After receiving approval of the proposed bridge replacement designs from the Wis. Dept. of Natural Resources and the U. S. Army Corps of Engineers, bids were solicited and the contract was awarded to Site Excavation Inc., Richland Center, which edged out Bob Ewers Contracting, Lone Rock. Earlier in the year, Ewers edged out Site Excavation for the three Clyde bridge replacements, also engineered by Jewell.

Trenton Smith of Site Excavation Inc., a resident of the Town of Wyoming, oversaw the removal of the two old bridge structures in Wyoming and the installation of the 56 foot long replacement culverts, (two for Weaver Road, three for Sneed Creek Road) as well as stream rip-rap and roadway resurface.

Total cost of the two bridge replacements was \$94,371, \$9,663 for engineering and \$84,708 for construction. The TRIP program will reimburse \$37,896, and the Iowa County 50/50 bridge cost sharing program will reimburse \$28,238, leaving a cost to the Town of \$28,238. The reimbursements will arrive in 2013.

Interim financing was obtained from the State Trust Fund for \$80,000 at a rate of 2% for two

years with early repayment allowed. The TRIP and County payments will cover \$66,133 of the loan, leaving \$13,867 to be repaid with Town funds.

Stream rip-rap was required beyond the 66 foot town road right-of-way for both projects, and the adjoining property owners conveyed easements at no cost to the Town to allow the installation of rip-rap on their properties – David and Dorothy Gorman and Russell and Janis Dixon along Sneed Creek Road, and Jason Dane Ranch, LLC (Jeff Jacobsen and Tony Mason) and Symon Oaks, LLC (Keith A. Symon) along Weaver Road. They are thanked for their contribution.

Since the length of the culverts is 56 feet and the Average Daily Traffic count is less than 250 vehicles per day, guard rails are not needed or required, and neither are the familiar yellow and black tiger stripe markers.



Craig Hardy, Iowa County Highway Commissioner, performing final inspections on the bridges on Sneed Creek Road above, and Weaver Road below.



TOWN OFFICERS		
Chairman	John Hess	588-7082
Supervisor	Len Olson	588-2064
Supervisor	Mike Degen	588-5346
Clerk	Mary Lloyd-Jones	588-9000
Treasurer	Laurie Baruch	753-9247
Assessor	Randy Edge	623-2719

WHAT'S LAND WORTH IN WYOMING?

The sales price of land averaged \$3560 per acre, but that number does not reflect the diversity and circumstances of the 10 arms-length land transactions this active past year compared to prior years. Parcel sizes ranged from 7 to 114 acres, and prices ranged from \$2,113 to \$8,209 per acre. But the average is definitely down - 17% from the peak year of 2007.

The 10 sales of property with acreage that were reported the past 12 months on the Wis. Dept. of Revenue's real estate closing forms totaled \$2,317,700 for 651 acres. Four of the transactions included residences, and the assessed value of the improvements was removed from the four sales prices to calculate the value of the acreage. See table below for comparisons to the past nine years.

<u>Year</u>	<u>No.</u>	<u>Acres</u>	<u>Av. Price</u>	<u>Price Range</u>	<u>Range*</u>
2012	10	651	\$3560	2113-8209	7-114
2011	7	490	3943	3050-4909	36-173
2010	5	411	4204	3547-4500	16-227
2009	5	732	4154	3820-4238	53-236
2008	No transactions				
2007	4	264	4301	4074-4500	53- 88
2006	6	415	3862	3254-4640	38-109
2005	3	298	3893	3649-3998	42-205
2004	5	389	2536	1671-3414	40-134
2003	7	830	2761	1788-3704	43-203

*Parcel size in acres

WHO IS REQUIRED TO RECYCLE IN WISCONSIN

Everyone, everywhere, all the time!

Wisconsin's recycling requirements apply to everyone in the state, at all locations. This includes schools, public places, businesses, special events, homes and apartments.

In Wyoming, inspection of the dumpsters reveals some recyclables are still going to landfills, despite Dean Fahrni's eagle eye. On the other hand, Wyoming residents are recycling at such a volume that the recycling container overflows many weeks. So the message is: Please keep up the volume, but help alleviate the overflow by breaking down boxes, crushing milk jugs, etc.

TOWN CAUCUS SET FOR JANUARY 8

With an election for town officers coming up on April 2, 2013, a caucus to nominate candidates for the Town Board will be held on Tuesday, January 8, 2013 at 7 PM at the Town Hall. Laurie Baruch, Treasurer for the past six years, will not be seeking reelection.

At the November 13, 2012 Budget Hearing and Special Town Meeting, increases in compensation for Board Members were approved, effective with the start of new terms in April, 2013. The Treasurer's pay was increased to \$4,000, the first increase since 2001. The Clerks pay was increased to \$6,000, also the first increase since 2001. Compensation for the Chairman and Supervisors also was increased, the first adjustment since 1991. The Chairman will be earning \$2000 plus \$50 per meeting, and the Supervisors will be earning \$500 plus \$50 per meeting. There are usually about 14 meetings per year.

The combination of the Clerk and Treasurer positions was considered but not acted on because an expensive annual audit would be required. Area accounting firms estimated the annual audit cost would be \$3,500 to \$4,500, money better spent on road maintenance. So a qualified candidate with computer skills is being solicited to run for Treasurer to replace Laurie Baruch, whose experience and work skills will be missed, but whose interests have now gravitated to grandchildren.

No one attended the Budget Hearing this year except the five Board members. Warren Hoyer always attended in the past to keep an eye on the Board, but he is now a resident of Greenway Manor.

The statutes require the caucus to be held between the first and last Tuesday of January. It is open to the public, but only qualified electors may nominate and vote for candidates. Any person 18 years of age or older, who has resided in the Town for at least 30 days before the caucus is a qualified elector, and also can be a candidate for office. Also, persons not living in the Town at the time of the caucus, but who intend to be residents by the time they would assume office, can be candidates, but not vote at the caucus. Except for the Assessor who is appointed, all town positions are to be filled for two year terms beginning April 16, 2013. The current office holders are shown on page 3.